

# The Bracing Broadcast

Occasional Journal of Bentele Orthodontics

ISSUE 7; Summer 2011



## this issue

Website News	P.1
Adult Orthodontics	P.2
Orthodontic Technology	P.3
Referral Rewards Program	P.4

## WEBSITE NEWS

Where did the website name [inner-smiles.com](http://inner-smiles.com) come from?

While serving in the Air Force I did two tours in England, once as a general dentist at RAF Bentwaters on the coast north of London. The 2<sup>nd</sup> tour was as the orthodontist and chief of clinical services at RAF Lakenheath near Cambridge. While there I enjoyed a band from Glasgow, Scotland oddly enough named "Texas". Their song *Inner Smile* reminded me that the best smiles start from the heart. It was featured in the film "Bend it Like Beckham".

## Inner-Smiles.com

Just in case you haven't checked out our website since downloading your initial exam forms it may be time for another look. Engaged and informed patients and families understand orthodontics and keep us on our toes. We've added a new section called: Ortho News & Articles. I recently spoke to a mother who was troubled by conflicting advice from a general dentist concerning extractions for orthodontic treatment. I limit the number of extractions required by starting braces at the optimal time and expanding when appropriate. However, sometimes extractions are the right answer to reach our common goals. Unfortunately this mother ran across a dentist who wanted to do the braces himself and tried to talk her out of recommended extractions when he wasn't current with research in this area. Thankfully she had already established trust with us and knew that we had her family's best interests at heart. It did prod me to create this informative area of our website. The first article explains "Evidence Based Care" which is the cornerstone of practicing with an eye towards science. The next one predictably covers extractions. Future installments will explore controversies about "Functional Orthodontics", "Damon braces claims", "Early Treatment", "6-month braces" and "TMJ issues". We'll keep printed versions in the reception area as well.

*Mark*

## Adult orthodontics

Did you know that approximately 20% of our patients are adults? Oftentimes the child starts in braces first and then the parent decides to go for the improvement in appearance and health that well aligned teeth bring. That's not always the case though. In one of our families the grandfather was first in treatment and now we see the grandson for care. Because growth is complete the orthodontic effect on jaw structure is more limited but otherwise the teeth move all the same. The problems may be more complex in the adult patient requiring closer cooperation with your general dentist. In addition to crooked teeth, adult patients may need their teeth aligned or bite corrected to make room for dental implants or

to improve access for cleaning where the teeth are overlapped. Many of our adult patients suffer from TMJ pain (temporomandibular joint) or facial muscle pain and may benefit from an improved bite. Whatever the reason, please let us take a look to see if we can be of help. Modern, porcelain braces can even be fairly inconspicuous as can be seen in the photo of Chelsea to the left.



Dr. Bentele celebrated 25 years in dentistry. He graduated from the University of Missouri-Kansas City School of Dentistry in 1986.

### **Some other events from 1986**

- Challenger Space Shuttle Disaster
- Chernobyl Disaster
- US Air Force bombs Libya (sounds familiar)
- The Chicago Bears and Refrigerator Perry win the Super Bowl 46 to 10 over the Patriots
- Grammy Best Album: Graceland by Paul Simon
- Most Popular TV Show: The Cosby Show
- Best Picture Academy Award: Out of Africa



Rowan was so proud of her headgear she got a matching American Girl doll to show us!



We make a living by what we get, but we make a life by what we give.

**Winston Churchill**



Ever wonder how we keep up with the personal, financial and treatment information for each patient?

Dolphin Imaging & Management is how. It is a suite of software that keeps that information a click away for us but safely behind a firewall. The Imaging portion consists of the digital photos, cephalometric film and panorex described in the box to the left. This is what you see when we sit down for the treatment planning conference. The Management portion keeps track of payments and insurance details as well as your contact information. Another area of Dolphin is used to plan, document and monitor care. After the examination appointment, the data are entered into the patient record and a summary is generated. This is then used to create an individualized, step by step treatment plan. At each appointment, notes are made on what is accomplished that day which is then electronically locked. Dolphin also tracks the number of months in treatment to make sure we stay on track. It's a far cry from when all this was kept on easily lost paper charts and Dr. Bentele analyzed cephalometric films with tracing paper and a protractor.

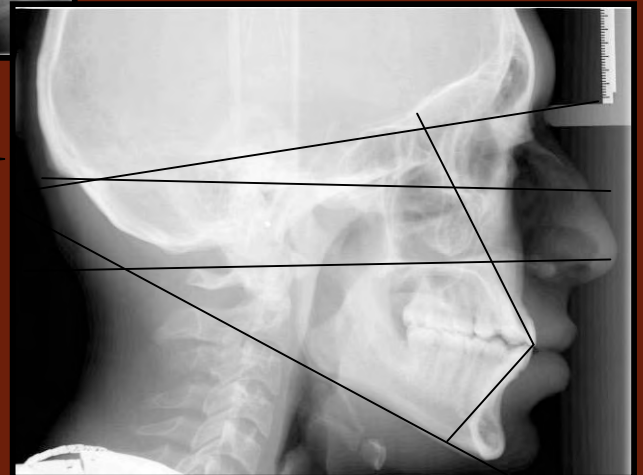
## Orthodontic Diagnostic Records

Excellent diagnostic records are the first step to an excellent orthodontic outcome. They form the basis for good decision making and provide a baseline of where the orthodontic treatment started. The components are:

- 1) Examination -- teeth and gums are examined for disease; muscles and mandibular joints function check; facial and lip profile examined for symmetry and balance.
- 2) Panoramic film: shows entire jaw structure, joints, sinuses and all of the teeth



- 3) Cephalometric film: a profile x-ray that shows if the jaws are proportional and how the incisors are angled. This is analyzed in the Dolphin Imaging system.
- 4) Diagnostic models and facebow: gives a 3-dimensional view of the oral structures and position in the head.



Sadly, we'll be saying goodbye to our Angela who has been such a part of our success since we started. She absorbed all of the years of Sue Shaner's wisdom at the reception desk and added her own special flair for connecting with our families and turning them all into friends. Angela's husband Mike has taken an Air Force assignment in Oklahoma City and they will be leaving in early summer. Although Mike is in the Air Force he admirably served as an Army Medic in Afghanistan last year while Angela bravely soldiered on here. Their daughters and son have grown up around the office as well and we will miss them all. We are fortunate to have hired Amanda who has 10 years experience in dental management. You will be meeting her at your next visit.

Thanks Angela for all your hard work



Find us on  
**Facebook**

Search for Bentele Orthodontics and "Like" us. We'll be posting fun and informative information here regularly.

## Referral Rewards Program

We very much appreciate the many patients who are referred to us from the patients and their families who already know us. We value this as the greatest compliment. Patients we meet in this way are already familiar with the personal way we practice and are always a good fit. We have created a popular gift-card rewards program to your favorite places like Target, Home Depot, Starbucks and Panera as a token of our thanks for your thoughtfulness. Please ask at the front desk or see the reception room display for details.



Bentele Orthodontics

2575 Montebello Dr W. #101  
Colorado Springs, CO 80918

(719) 268-7138

[www.inner-smiles.com](http://www.inner-smiles.com)